



Cal Zant

President, Betenbough Homes

A Leader's Mission

To intentionally care for their people and raise them up to their God-given potential.

Know Them

**Ron
Swanson**

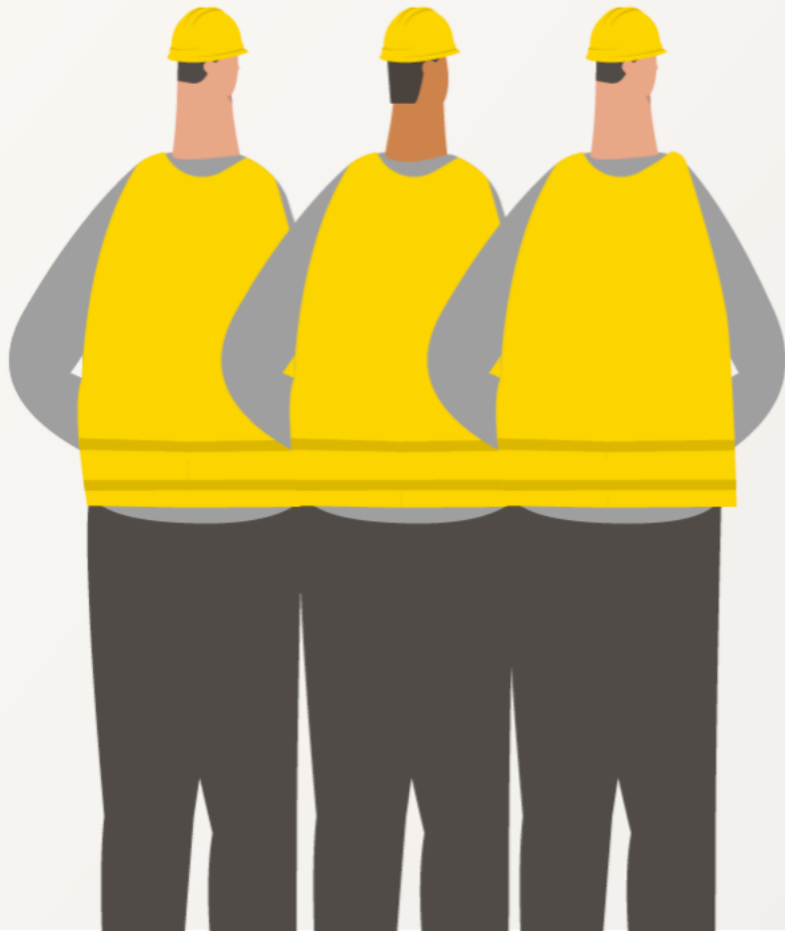




Know Them

- Shoulder-to-Shoulder

BUILDERS



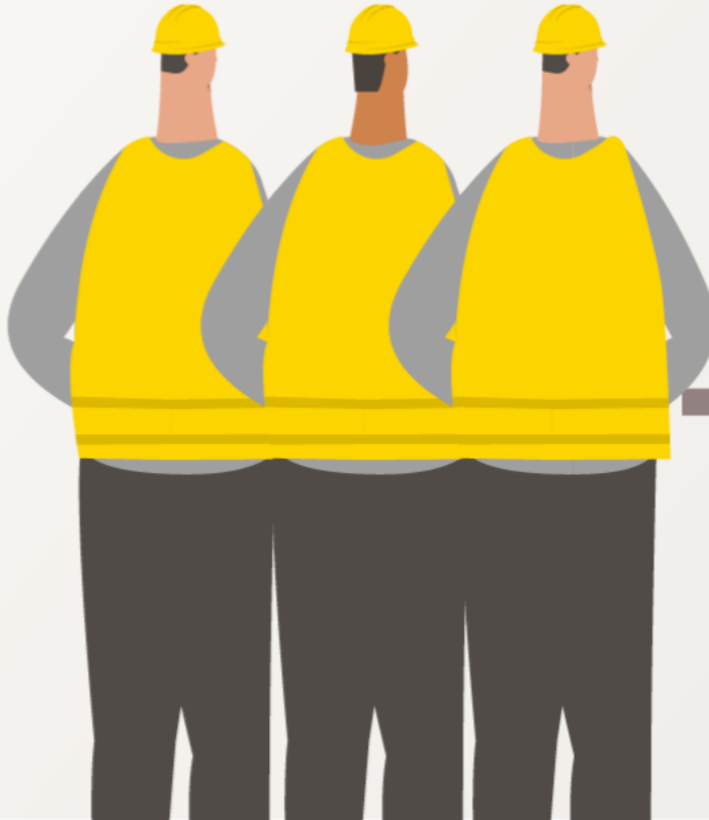
BUILDERS

CM



CM

BUILDERS



GM

CM

BUILDERS



BUILDERS

CM GM



GM

CM

BUILDERS



**As a leader, you are in
the people business.**

Know Them

- Shoulder-to-Shoulder
- Heart-to-Heart

**The Lord doesn't need great leaders -
He's looking for obedient ones.**

**When it comes to vulnerability,
the leader must go first.**

**Success isn't measured in salvations,
but in obedience to the small promptings.**

**A leader can only deeply engage and connect
with 5-6 people on a weekly basis
...beyond that, we restructure.**

Grow Them

Grow Them

- Raise them up



Grow Them

- Raise them up
- Give them real authority

**You can have control or growth,
but you can't have both.**

Growth Questions

01. What does “going to the next level” look like for that person?
02. How can you expand their territory?
03. When are they ready for that next challenge?

Grow Them

- Raise them up
- Give them real authority
- Do it for their benefit

Grow Them

- Raise them up
- Give them real authority
- Do it for their benefit
- Be accountable to each other

**Accountability can't be high
if relationship is low.**

Know Them and Grow Them

